



2017 ANNUAL REPORT

A LETTER FROM THE PRESIDENT

Dear Friends of the FMDA,

Thank you for your support and contributions over the past twelve months. As a nonprofit organization, we face many challenges, both financial and in terms of participation. Without the help of our donors, doctors, supporters, and especially our patients we would not be where we are today. We have surpassed even our wildest expectations. From our humble beginnings of a few dreamers sitting around a kitchen table we have become an organization well respected throughout the world for our accomplishments.

Awareness is what we are all about. When people look for answers they look to us for our guidance, leadership, and support. The Patient Registry has grown from an idea to the foundation for numerous research articles, and it promises to be the source of clues leading to a better understanding of FMD. Each year new Registry Centers provide more patients to provide data to the scientific community throughout the world.

Our international connections have grown using us as an example of what can be done when people come together for a common goal. We now share with our colleagues throughout the world in a concerted effort to face the challenges of FMD.

We have established ourselves as an integral part of the Cleveland Marathon, providing runners, information booths, and raising money every year. Our web chats, Facebook and Twitter accounts are viewed by thousands. FMDA has been helpful worldwide in providing newly diagnosed patients an understanding of the disease. We get calls and emails daily from people seeking our help.

Our goal is to be able to continue our mission and grow the organization throughout the world. We are always seeking volunteers, supporters, and donors, to keep the dream alive. When you think about the things FMDA has done for you, hopefully you will pay it forward and make it easier for the next person to get the help they need. Without your donations there cannot be an FMDA.

Bradley J Daar, President



2017 ANNUAL REPORT

FINANCIAL INFORMATION PREPARED FROM REVIEWED FINANCIAL STATEMENTS

Fibromuscular Dysplasia Society of America, Inc. (A Non-Profit Organization)

Statement of Financial Position December 31, 2017 and 2016

ASSETS	2017	2016
CURRENT ASSETS		
Cash and cash equivalents	\$ 79,099	\$ 93,114
Investments	0	9,917
Total Assets	<u>\$ 79,099</u>	<u>\$ 103,031</u>
 LIABILITIES AND UNRESTRICTED CURRENT ASSETS		
CURRENT LIABILITIES		
Accounts payable	159	6,178
 UNRESTRICTED NET ASSETS	 78,940	 96,853
	<u>\$ 79,099</u>	<u>\$ 103,031</u>



2017 ANNUAL REPORT

Fibromuscular Dysplasia Society of America, Inc. (A Non-Profit Organization)

Statement of Activities and Net Assets For the Years Ended December 31, 2017 and 2016

	2017	2016
SUPPORT AND REVENUE		
Contributions and grants	\$ 126,926	\$ 161,377
Programs	11,520	8,207
Total public support	138,446	169,584
Other revenue		
Investment income	3,032	52
Total unrestricted support and revenue	141,478	169,636
EXPENSES		
Program services	126,155	124,668
Fundraising	13,228	16,598
General and Administrative	20,008	19,986
Total expenses	159,391	161,252
Change in unrestricted net assets	(17,913)	8,384
Unrestricted net assets at beginning of year	96,853	88,469
Unrestricted net assets at end of year	\$ 78,940	\$ 96,853



2017 ANNUAL REPORT

Fibromuscular Dysplasia Society of America, Inc. (A Non-Profit Organization)

Statement of Functional Expenses For the Year Ended December 31, 2017

	Program		General and	
	Services	Fundraising	Administrative	Total
Patient registry	\$ 40,416	\$	\$	\$ 40,416
Fundraising fees		2,610		2,610
Accounting and legal			4,142	4,142
Salaries and payroll taxes	64,445	7,859	6,287	78,591
Supplies	96	230	413	739
Telecommunications			3,496	3,496
Information technology	108			108
Insurance			2,003	2,003
Postage and mailing services	194			194
Printing and copying	284			284
Facility and equipment expenses			3,371	3,371
Travel and meetings	19,774		15	19,789
Miscellaneous	357		281	638
Business registration fees	481	2,529		3,010
	<u>\$ 126,155</u>	<u>\$ 13,228</u>	<u>\$ 20,008</u>	<u>\$ 159,391</u>

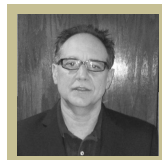


2017 ANNUAL REPORT

2017 BOARD OF DIRECTORS



Pamela Mace, RN
Executive Director
FMD patient
pam.mace@fmdsa.org



Dr. Bradley Daar
President
brad.daar@fmdsa.org



Maureen Womack, RN
Secretary
FMD patient
maureen.womack@fmdsa.org



Carol Rogers
Director-At-Large
carol.rogers@fmdsa.org



Mimi Petersen
Director-At-Large
Mimi.petersen@fmdsa.org

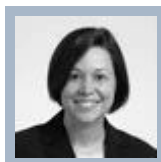


Sara Bailey
Director-At-Large
sara.bailey@fmdsa.org

2017 MEDICAL ADVISORY BOARD



Jeffrey W. Olin, DO, FACP, FACC
Board Chairman
Professor of Medicine
Director, Vascular Medicine
Zena and Michael A. Wiener
Cardiovascular Institute
Mount Sinai School of Medicine
New York, New York



Heather L. Gornik, MD
Medical Director, Non-Invasive
Vascular Laboratory
Cleveland Clinic Heart and
Vascular Institute
The Cleveland Clinic Foundation
Cleveland, Ohio



2017 ANNUAL REPORT

2017 MEDICAL ADVISORY BOARD (CONTINUED)



Kevin E. Meyers, MD
Pediatric Nephrologist
Assistant Professor of Pediatrics
The Children's Hospital of Philadelphia
and University of Pennsylvania
Philadelphia, Pennsylvania



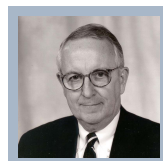
Associate Professor of Pediatrics
Associate Professor of Neurology
Nationwide Children's Hospital
Columbus, Ohio



Philip B. Gorelick, MD, MPH
John S. Garvin Professor and Head
Director
Center for Stroke Research
Dept. of Neurology & Rehabilitation
University of Illinois College of Medicine
Chicago, Illinois



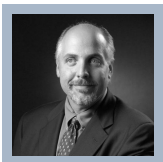
Santhi K. Ganesh, M.D.
Assistant Professor of Medicine
Division of Cardiovascular Medicine
University of Michigan Health System



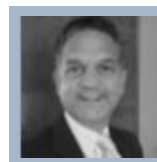
James C. Stanley, MD
Professor of Surgery
Handleman Research Professor of
Vascular Surgery
University of Michigan Health System



Alan H. Matsumoto, M.D., FACR, FSIR
FAHA Chair and Theodore E. Keats
Professor of Radiology
Department of Radiology and Medical
Imaging
University of Virginia Health System



Associate Professor of Medicine, Harvard
Medical School. Medical Director,
Vascular Center
Vascular Diagnostic Laboratory
Vascular Ultrasound Core Laboratory
Massachusetts General Hospital



Bruce Gray, DO
Vascular Medicine, Greenville Hospital
System. Greenville
South Carolina



2017 ANNUAL REPORT

2017 ADVISORY COUNCIL



Kim A. Eagle, MD

Albion Walter Hewlett Professor
of Internal Medicine
Chief of Clinical Cardiovascular
Medicine
Director and Education Lead,
Cardiovascular Center
Ann Arbor, Michigan



Robert D. Kubic, MBA

Chief Operating Officer
Honigman Miller Schwartz and
Cohn LLP
Detroit, Michigan



James Baranski, CEO

National Stroke Association.
Member, various stroke-focused
organizational advisory boards,
including the Brain Attack
Coalition, National Forum for

Heart Disease and Stroke and the
World Stroke Association



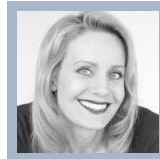
Joan Legraw, RN, JD, MPH

Cape Cod Research Institute
General Counsel & Consultant for
Ethical & Regulatory Affairs
Barnstable, Massachusetts



Kay Tanner, JD

Former FMDA Board Member.
Dell, Inc...Austin, Texas



Eileen Gruba

Eileen is a working actress, writer
and producer. She was the US
Ambassador for GE Healthcare's
Get Fit campaign in 2012,
spokesperson for LSI: Families
with hereditary cancers, an
advocate for children with rare
illnesses, and an advocate for the
inclusion of people with physical
challenges in the entertainment
industry.



2017 ANNUAL REPORT

2017 FMDSA GIVING HONOR ROLL

Champion \$5,000 and over

Jodi Roth Cheryl Golden Bradley and Terri Daar Molly Clark and Kay Tanner
Lattner Family Foundation Robert Kubic & Pamela Mace Virginia Eldeman

Hero \$1,000 - \$4,999

Phyllis Labatut Baker Marianne M Townsend Andrea Spears Martha Clark
Mark Kasper Maureen Womack Peggy & Patrick McFarland Joseph Carroll
Fran & Albert Zucco Karen Schiff

Benefactor \$500 - \$999

Angeline Young Richard & Susan Gould Erin Schutte Patricia Hurst Lisa MacLean
Cindy Basque Heather L Stetina Wanda Joanne Ellis Karen Hartman
Brent Johnson Carol Rogers Chris Lewis Burke Donna B Nadler Mark T Patterson
Kellie Smiddle Kevin Myers, MD Kimberly Waters Linda Wetzel Yenifel Cohn
Nikki Esserman Wolpe Stephen L White William A.H. MacLean

Patron \$250 - \$499

Rosann Kahn Mann Jennifer Cohen Richard & Karen Doll Susan B Carle Tracey Toto
Aric Newhouse Beth Snider Claudia Brown Diane Lynn Adams Mary Wright Baylor Maxine Hull
Peter McManus Susan Cooper Nina Verstraete

**We apologize that we are unable to recognize everyone who has contributed
to the success of our organization this year.**

Thank you all for your support!